



QUICK APPRAISAL DISCLAIMER: This report has been compiled from various data sources received from a number of agencies and with information supplied by applicants for mining tenements. No responsibility is accepted for any error or omission. The Commonwealth of Australia (c) 2002, through Geoscience Australia and Department of Defence maintains copyright over those parts of the topographic data it has provided for display in TENGGRAPH. Users wishing to use the data in its unaltered form should contact Geoscience Australia at www.ga.gov.au. Confirmation of the extent and composition of any Native Title Claims should be sought from the Native Title Spatial Services Landgate. Tengraph does not identify any land that has been alienated from the Crown before 1 January 1899 and a search of title records should be carried out through Landgate to identify this category of land. Land alienated from the Crown prior to 1 January 1899 may be open for mining only in respect to gold, silver and precious metals.

APPRAISAL ID: M 24/960

Tenement Status: Live **Boundary Type:** Granted Live
Holder/Applicant: SIBERIA MINING CORPORATION PTY LTD
Markout Date: 16/02/2016 19:25:00
Lodgement Date: 19/02/2016 16:16:00
Object Area: 2029.43 Ha. **Centroid:** (30° 14' 4" S, 120° 56' 51" E)
Appraisal Options: Admin Boundaries Affected, Tenements Affected, Land Affected, Native Title Details, Petroleum, Services/Infrastructure Affected, Map Sheet Details
Datum: GDA94

ADMINISTRATION BOUNDARIES AFFECTED

Name	Type	Encroached Area	Encroached Percentage
JAUARDI	Land District	2029.4256HA	100%
EASTERN LAND DIVISION	Land Division	2029.4256HA	100%
KALGOORLIE-BOULDER CITY	LGA (Shire) Boundaries	2029.4256HA	100%
SIBERIA	Townsite Boundary	44.815HA	2.21%
BROAD ARROW M F 24	Mineral Field Boundaries	2029.4256HA	100%

TENEMENTS AFFECTED

Tenement ID	Marking out/Lodgement	Holder/Applicant(s)	Status	Encroached Area	Encroached Percentage
L 24/85	11/06/1987 14:00:00	SIBERIA MINING CORPORATION PTY LTD	Live	1.6083HA	0.08%
L 24/188	29/08/2003 12:45:00	SIBERIA MINING CORPORATION PTY LTD	Live	15.2506HA	0.75%
L 24/224	13/01/2016 08:30:00	SIBERIA MINING CORPORATION PTY LTD	Live	0.2524HA	0.01%
L 24/242	05/02/2020 15:39:53	CARNEGIE GOLD PTY LTD	Live	0.8686HA	0.04%
L 24/246	12/01/2021 11:31:51	SIBERIA MINING CORPORATION PTY LTD	Live	0.8254HA	0.04%

DEAD TENEMENTS AFFECTED (NOT SELECTED)

LAND AFFECTED

Land ID	Purpose/Name	Land Type	Responsible Agency/Vesting	Encroached Area	Encroached Percentage
R 17219	"C" CLASS RESERVE COMMON	Reserve	DEPARTMENT OF PLANNING, LANDS AND HERITAGE (SLSD)	1198.7042HA	59.07%
R 6209	"C" CLASS RESERVE PUBLIC UTILITY	Reserve	DEPARTMENT OF PLANNING, LANDS AND HERITAGE (SLSD)	0.1012HA	<0.01%
R 6211	"C" CLASS RESERVE PUBLIC UTILITY	Reserve	DEPARTMENT OF PLANNING, LANDS AND HERITAGE (SLSD)	38.9814HA	1.92%
R 7740	"C" CLASS RESERVE RUBBISH & SANITARY DISPOSAL SITE	Reserve	DEPARTMENT OF PLANNING, LANDS AND HERITAGE (SLSD)	2.0238HA	0.1%



QUICK APPRAISAL DISCLAIMER: This report has been compiled from various data sources received from a number of agencies and with information supplied by applicants for mining tenements. No responsibility is accepted for any error or omission. The Commonwealth of Australia (c) 2002, through Geoscience Australia and Department of Defence maintains copyright over those parts of the topographic data it has provided for display in TENGGRAPH. Users wishing to use the data in its unaltered form should contact Geoscience Australia at www.ga.gov.au. Confirmation of the extent and composition of any Native Title Claims should be sought from the Native Title Spatial Services Landgate. Tengraph does not identify any land that has been alienated from the Crown before 1 January 1899 and a search of title records should be carried out through Landgate to identify this category of land. Land alienated from the Crown prior to 1 January 1899 may be open for mining only in respect to gold, silver and precious metals.

APPRAISAL ID: M 24/960

Tenement Status: Live **Boundary Type:** Granted Live
Holder/Applicant: SIBERIA MINING CORPORATION PTY LTD
Markout Date: 16/02/2016 19:25:00
Lodgement Date: 19/02/2016 16:16:00
Object Area: 2029.43 Ha. **Centroid:** (30° 14' 4" S, 120° 56' 51" E)
Appraisal Options: Admin Boundaries Affected, Tenements Affected, Land Affected, Native Title Details, Petroleum, Services/Infrastructure Affected, Map Sheet Details
Datum: GDA94

LAND AFFECTED

Land ID	Purpose/Name	Land Type	Responsible Agency/Vesting	Encroached Area	Encroached Percentage
R 7806	"C" CLASS RESERVE POST OFFICE	Reserve	DEPARTMENT OF PLANNING, LANDS AND HERITAGE (SLSL)	0.2023HA	0.01%
R 8052	"C" CLASS RESERVE CEMETERY	Reserve	DEPARTMENT OF PLANNING, LANDS AND HERITAGE (SLSL)	1.6091HA	0.08%
DAVYHURST-ORA BANDA ROAD	Road Regional	Road Isolation	See Services for agency information	7.0813HA	0.35%
FORREST STREET	Road Regional	Road Isolation	See Services for agency information	0.2923HA	0.01%
FROST STREET	Road Regional	Road Isolation	See Services for agency information	1.2293HA	0.06%
KIRKHAM STREET	Road Regional	Road Isolation	See Services for agency information	0.4763HA	0.02%
ROW	Road Regional	Road Isolation	See Services for agency information	0.2148HA	0.01%
Freehold Regional	Freehold Regional:1 Land parcels affected	Private/Freehold	Landgate	0.1012HA	<0.01%
PL N050354	Pastoral Lease (C) MT BURGESS	Lease	Department of Planning, Lands and Heritage	709.6567HA	34.97%
Unallocated Crown Land	Unallocated Crown Land:33 Land parcels affected	Cadastral	Landgate	68.7517HA	3.39%
HSA 105639 1	Aboriginal Heritage Survey Areas	Special Category Land	Department of Planning, Lands and Heritage	1809.7321HA	89.17%
HSA 21691 1	Aboriginal Heritage Survey Areas	Special Category Land	Department of Planning, Lands and Heritage	537.4478HA	26.48%
GWA 21	GROUNDWATER AREA GOLDFIELDS	Special Category Land	Dept. of Water and Environmental Regulation	2029.4256HA	100%
MZ 2	MINERALISATION ZONE, NON SECTION 57(2AA) SOUTHERN SECTION	Special Category Land	Dept. of Mines, Industry Regulation and Safety	2029.4256HA	100%
S57 1 BROAD ARROW	Section 57 (4)	Special Category Land	Dept. of Mines, Industry Regulation and Safety	2029.4256HA	100%

NATIVE TITLE AREAS AFFECTED

NTRB ID	Name	NTRB	Description	Encroached Area	Encroached Percentage
ARB 13	Goldfields (ARB13)	NATIVE TITLE SERVICES GOLDFIELDS	Aboriginal Representative Body	2029.4256HA	100%



QUICK APPRAISAL DISCLAIMER: This report has been compiled from various data sources received from a number of agencies and with information supplied by applicants for mining tenements. No responsibility is accepted for any error or omission. The Commonwealth of Australia (c) 2002, through Geoscience Australia and Department of Defence maintains copyright over those parts of the topographic data it has provided for display in TENGGRAPH. Users wishing to use the data in its unaltered form should contact Geoscience Australia at www.ga.gov.au. Confirmation of the extent and composition of any Native Title Claims should be sought from the Native Title Spatial Services Landgate. Tengraph does not identify any land that has been alienated from the Crown before 1 January 1899 and a search of title records should be carried out through Landgate to identify this category of land. Land alienated from the Crown prior to 1 January 1899 may be open for mining only in respect to gold, silver and precious metals.

APPRAISAL ID: M 24/960

Tenement Status: Live **Boundary Type:** Granted Live
Holder/Applicant: SIBERIA MINING CORPORATION PTY LTD
Markout Date: 16/02/2016 19:25:00
Lodgement Date: 19/02/2016 16:16:00
Object Area: 2029.43 Ha. **Centroid:** (30° 14' 4" S, 120° 56' 51" E)
Appraisal Options: Admin Boundaries Affected, Tenements Affected, Land Affected, Native Title Details, Petroleum, Services/Infrastructure Affected, Map Sheet Details
Datum: GDA94

NATIVE TITLE AREAS AFFECTED

NTRB ID	Name	NTRB	Description	Encroached Area	Encroached Percentage
		PO BOX 3007, EAST PERTH, WA, 6004 SAME AS CORRESPONDENCE			

Claimed FED CRT No	Name	Claimant Representative	Description	Encroached Area	Encroached Percentage
WAD647/2017	Marliny Ghoolie WC2017/007	BLACKSHIELD LAWYERS LEVEL 28, AMP TOWER, 140 ST GEORGES TERRACE, PERTH, WA, 6000 SAME AS CORRESPONDENCE	Native Title Claims	2029.4256HA	100%

Determined FED CRT No	Name	Prescribed Body Corporate	Description	Encroached Area	Encroached Percentage
no intersections					

ILUA Subject Matter ID	Name	ILUA Title	Description	Encroached Area	Encroached Percentage
no intersections					

ENT No	Name	Managed By	Description	Encroached Area	Encroached Percentage
no intersections					

Pre-1994 Leases	Description	Encroached Area	Encroached Percentage
no intersections			

PETROLEUM/GEOTHERMAL TITLES AFFECTED

ID	Title Type	Holder/Applicant	Encroached Area	Encroached Percentage
no intersections				

SERVICES / INFRASTRUCTURE AFFECTED

Count	Layer	Description
1	Mines and Mineral Deposits	Alluvials,Siberia Alluvials, (Shut)
1	Mines and Mineral Deposits	Area 1,Canegrass Area 1, (Undeveloped)
1	Mines and Mineral Deposits	Area 2,Canegrass Area 2, (Undeveloped)
1	Mines and Mineral Deposits	Banks,Banks, (Undeveloped)



QUICK APPRAISAL DISCLAIMER: This report has been compiled from various data sources received from a number of agencies and with information supplied by applicants for mining tenements. No responsibility is accepted for any error or omission. The Commonwealth of Australia (c) 2002, through Geoscience Australia and Department of Defence maintains copyright over those parts of the topographic data it has provided for display in TENGGRAPH. Users wishing to use the data in its unaltered form should contact Geoscience Australia at www.ga.gov.au. Confirmation of the extent and composition of any Native Title Claims should be sought from the Native Title Spatial Services Landgate. Tengraph does not identify any land that has been alienated from the Crown before 1 January 1899 and a search of title records should be carried out through Landgate to identify this category of land. Land alienated from the Crown prior to 1 January 1899 may be open for mining only in respect to gold, silver and precious metals.

APPRAISAL ID: M 24/960

Tenement Status: Live **Boundary Type:** Granted Live
Holder/Applicant: SIBERIA MINING CORPORATION PTY LTD
Markout Date: 16/02/2016 19:25:00
Lodgement Date: 19/02/2016 16:16:00
Object Area: 2029.43 Ha. **Centroid:** (30° 14' 4" S, 120° 56' 51" E)
Appraisal Options: Admin Boundaries Affected, Tenements Affected, Land Affected, Native Title Details, Petroleum, Services/Infrastructure Affected, Map Sheet Details
Datum: GDA94

SERVICES / INFRASTRUCTURE AFFECTED

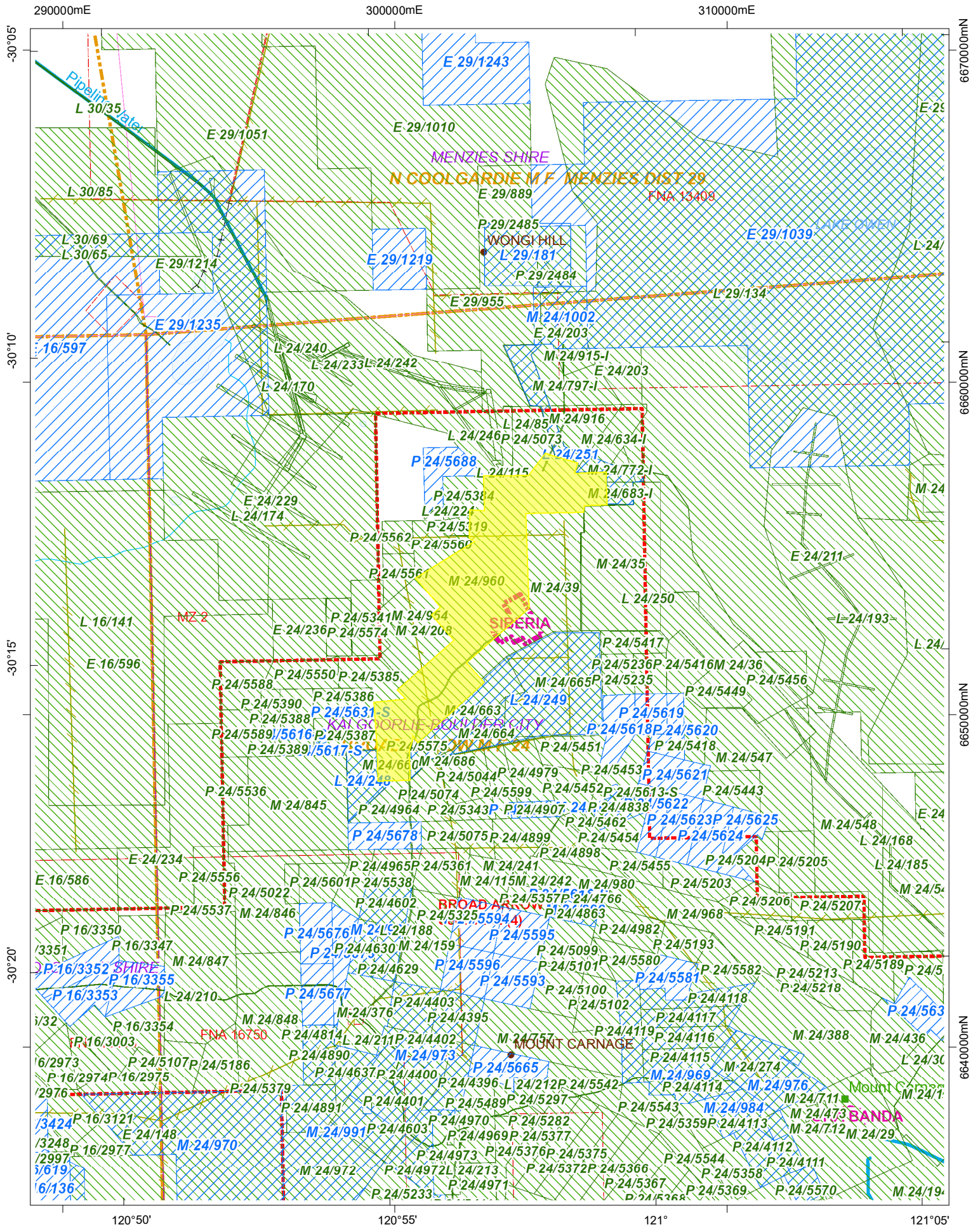
Count	Layer	Description
1	Mines and Mineral Deposits	Berwick Moreing,Berwick Moreing, (Shut)
1	Mines and Mineral Deposits	Dreadnought,Dreadnought / Gilt-Edged, (Undeveloped)
1	Mines and Mineral Deposits	Dryblowing,Siberia Dryblowing / Schreurs, (Shut)
1	Mines and Mineral Deposits	Dryblowing,Siberia South West, (Shut)
50	Mines and Mineral Deposits	Historical Minesites
1	Mines and Mineral Deposits	Julia,Julia, (Shut)
1	Mines and Mineral Deposits	Keiths,Keiths, (Undeveloped)
1	Mines and Mineral Deposits	Missouri E,Missouri East, (Undeveloped)
1	Mines and Mineral Deposits	Missouri N,Missouri North, (Care and Maintenance)
1	Mines and Mineral Deposits	Palmerston-Camperdown,Palmerston - Camperdown, (Care and Maintenance)
1	Mines and Mineral Deposits	Sand King Borefield,Sand King Borefield, (Proposed)
1	Mines and Mineral Deposits	Siberia,Siberia - Siberia Gold, (Care and Maintenance)
1	Mines and Mineral Deposits	Sky,Sky, (Undeveloped)
1	Mines and Mineral Deposits	Southern Point,Southern Point, (Undeveloped)
1	Mines and Mineral Deposits	WRL West,Sand King WRL West, (Proposed)
1	Mines and Mineral Deposits	WRL,Missouri WRL, (Proposed)
1	Mines Operating or Under Development	Alluvials,Missouri Alluvials, (Operating)
1	Mines Operating or Under Development	Env Group,Siberia Environmental Group, (Operating)
1	Mines Operating or Under Development	Haul and Access Roads,Siberia Haul and Access Roads, (Operating)
1	Mines Operating or Under Development	Missouri,Missouri, (Operating)
1	Mines Operating or Under Development	Sand King,Sand King, (Operating)
1	Mines Operating or Under Development	Siberia,Siberia Group / SMC, (Operating)
4387	Abandoned Mines Inventory	
1	Building	
2	Fences	Fence
1	Hydrology Point Feature	Well
3	Road Network	Minor, Davyhurst-Ora Banda Rd, LGA
36	Road Network	Minor, LGA
17	Road Network	Track
1	Survey Traverse Line	CUMMING FB 48
5	Watercourse Line	

MAP SHEETS AFFECTED

Map Sheet Id	Map Sheet Name	Map Scale	Encroached Area	Encroached Percentage
3037	DAVYHURST	1:100,000 Mapsheet Index	2029. 4256HA	100%
SH5109	KALGOORLIE	1:250,000 Mapsheet Index	2029. 4256HA	100%
SH51	KALGOORLIE	1:1,000,000 Mapsheet Index	2029. 4256HA	100%



M 24/960, Quick Appraisal Plan



This plan has been compiled from various data sources received from a number of agencies and with information supplied by applicants for mining tenements. No responsibility is accepted for any error or omission. The Commonwealth of Australia (c) 2002, through Geoscience Australia and the Department of Defence, maintains copyright over those parts of the topographic data it has provided for display in TENGRAPH. Users wishing to use the data in its unaltered form should contact Geoscience Australia at www.ga.gov.au. Confirmation of the extent and composition of any Native Title Claims should be sought from the Native Title Spatial Services Landgate. Enclosed Pastoral Lease land and Pre 1994 mining confined to Nharuwanngga Wajarri and Ngariwanngga ILUA Native Title determination boundary.

Scale: 1:144,448

