



QUICK APPRAISAL DISCLAIMER: This report has been compiled from various data sources received from a number of agencies and with information supplied by applicants for mining tenements. No responsibility is accepted for any error or omission. The Commonwealth of Australia (c) 2002, through Geoscience Australia and Department of Defence maintains copyright over those parts of the topographic data it has provided for display in TENGGRAPH. Users wishing to use the data in its unaltered form should contact Geoscience Australia at www.ga.gov.au. Confirmation of the extent and composition of any Native Title Claims should be sought from the Native Title Spatial Services Landgate. Tengraph does not identify any land that has been alienated from the Crown before 1 January 1899 and a search of title records should be carried out through Landgate to identify this category of land. Land alienated from the Crown prior to 1 January 1899 may be open for mining only in respect to gold, silver and precious metals.

APPRAISAL ID: M 30/255

Tenement Status: Live **Boundary Type:** Granted Live
Holder/Applicant: CARNEGIE GOLD PTY LTD
Markout Date: 31/03/2016 11:35:00
Lodgement Date: 31/03/2016 15:37:00
Object Area: 7413.89 Ha. **Centroid:** (30° 3' 43" S, 120° 39' 17" E)
Appraisal Options: Admin Boundaries Affected, Tenements Affected, Land Affected, Native Title Details, Petroleum, Services/Infrastructure Affected, Map Sheet Details
Datum: GDA94

ADMINISTRATION BOUNDARIES AFFECTED

Name	Type	Encroached Area	Encroached Percentage
JAURDI	Land District	556. 8246HA	7.51%
ULARRING	Land District	6857. 0636HA	92.49%
EASTERN LAND DIVISION	Land Division	7413. 8882HA	100%
COOLGARDIE SHIRE	LGA (Shire) Boundaries	556. 8263HA	7.51%
MENZIES SHIRE	LGA (Shire) Boundaries	6857. 0619HA	92.49%
DAVYHURST	Townsite Boundary	207. 7862HA	2.8%
COOLGARDIE M F KUNANALLING DIST 16	Mineral Field Boundaries	565. 4124HA	7.63%
N COOLGARDIE M F ULARRING DIST 30	Mineral Field Boundaries	6848. 4758HA	92.37%

TENEMENTS AFFECTED

Tenement ID	Marking out/Lodgement	Holder/Applicant(s)	Status	Encroached Area	Encroached Percentage
E 16/473	03/02/2015 13:20:07	CARNEGIE GOLD PTY LTD	Live	0.0032HA	<0.01%
E 16/610	01/06/2022 08:30:00	JINDALEE RESOURCES LIMITED	Pending	15.1808HA	0.2%
E 30/511	10/04/2019 09:28:31	ROCKTIVITY GOLD PTY LTD	Live	0.0024HA	<0.01%
E 30/545	01/06/2022 08:30:00	AMERY HOLDINGS PTY LTD	Pending	35.4261HA	0.48%
E 30/548	01/06/2022 08:30:00	JINDALEE RESOURCES LIMITED	Pending	35.4261HA	0.48%
E 30/566	28/04/2023 15:32:15	AMERY HOLDINGS PTY LTD	Pending	36.1289HA	0.49%
L 16/137	20/11/2020 16:19:41	SIBERIA MINING CORPORATION PTY LTD	Live	0.4745HA	0.01%
L 24/240	13/08/2018 08:30:00	CARNEGIE GOLD PTY LTD	Live	12.1726HA	0.16%
L 30/35	25/06/1992 10:55:00	CARNEGIE GOLD PTY LTD	Live	3.3021HA	0.04%
L 30/37	02/12/1996 15:50:00	CARNEGIE GOLD PTY LTD	Live	4.1682HA	0.06%
L 30/69	03/05/2018 15:34:34	CARNEGIE GOLD PTY LTD	Live	0.0152HA	<0.01%
L 30/78	21/04/2020 13:28:51	CARNEGIE GOLD PTY LTD	Live	6.6383HA	0.09%
L 30/82	09/11/2020 12:12:07	CARNEGIE GOLD PTY LTD	Live	0.4755HA	0.01%
L 30/97	13/04/2023 08:30:00	CARNEGIE GOLD PTY LTD	Pending	0.6412HA	0.01%

DEAD TENEMENTS AFFECTED (NOT SELECTED)



QUICK APPRAISAL DISCLAIMER: This report has been compiled from various data sources received from a number of agencies and with information supplied by applicants for mining tenements. No responsibility is accepted for any error or omission. The Commonwealth of Australia (c) 2002, through Geoscience Australia and Department of Defence maintains copyright over those parts of the topographic data it has provided for display in TENGGRAPH. Users wishing to use the data in its unaltered form should contact Geoscience Australia at www.ga.gov.au. Confirmation of the extent and composition of any Native Title Claims should be sought from the Native Title Spatial Services Landgate. Tengraph does not identify any land that has been alienated from the Crown before 1 January 1899 and a search of title records should be carried out through Landgate to identify this category of land. Land alienated from the Crown prior to 1 January 1899 may be open for mining only in respect to gold, silver and precious metals.

APPRAISAL ID: M 30/255

Tenement Status: Live **Boundary Type:** Granted Live
Holder/Applicant: CARNEGIE GOLD PTY LTD
Markout Date: 31/03/2016 11:35:00
Lodgement Date: 31/03/2016 15:37:00
Object Area: 7413.89 Ha. **Centroid:** (30° 3' 43" S, 120° 39' 17" E)
Appraisal Options: Admin Boundaries Affected, Tenements Affected, Land Affected, Native Title Details, Petroleum, Services/Infrastructure Affected, Map Sheet Details
Datum: GDA94

LAND AFFECTED

Land ID	Purpose/Name	Land Type	Responsible Agency/Vesting	Encroached Area	Encroached Percentage
R 10111	"C" CLASS RESERVE EXCEPTED FROM SALE	Reserve	DEPARTMENT OF PLANNING, LANDS AND HERITAGE (SLSD)	228.6754HA	3.08%
R 10261	"C" CLASS RESERVE EXCEPTED FROM SALE	Reserve	DEPARTMENT OF PLANNING, LANDS AND HERITAGE (SLSD)	0.4048HA	0.01%
R 10627	"C" CLASS RESERVE PUBLIC BUILDINGS	Reserve	DEPARTMENT OF PLANNING, LANDS AND HERITAGE (SLSD)	0.4049HA	0.01%
R 12202	"C" CLASS RESERVE COMMON	Reserve	RA:DEPARTMENT OF PLANNING, LANDS AND HERITAGE (SLSD) MANAGEMENT ORDER SHIRE OF MENZIES	3882.3174HA	52.37%
R 7741	"B" CLASS RESERVE RECREATION	Reserve	RA:DEPARTMENT OF PLANNING, LANDS AND HERITAGE (SLSD) MANAGEMENT ORDER TRUSTEES	8.5878HA	0.12%
R 7745	"C" CLASS RESERVE WATER ACT 57 VIC NO 20	Reserve	RA:DEPARTMENT OF WATER AND ENVIRONMENTAL REGULATION (SWWC) VEST: WATER & RIVERS COMMISSION	28.6486HA	0.39%
R 7812	"C" CLASS RESERVE CAMPING	Reserve	DEPARTMENT OF PLANNING, LANDS AND HERITAGE (SLSD)	8.1091HA	0.11%
R 7831	"C" CLASS RESERVE EXCEPTED FROM SALE	Reserve	DEPARTMENT OF PLANNING, LANDS AND HERITAGE (SLSD)	0.5061HA	0.01%
R 7870	"C" CLASS RESERVE CEMETERY	Reserve	RA:DEPARTMENT OF PLANNING, LANDS AND HERITAGE (SLSD) VEST TRUSTEES	1.1273HA	0.02%
R 7949	"C" CLASS RESERVE MECHANICS INSTITUTE	Reserve	RA:DEPARTMENT OF PLANNING, LANDS AND HERITAGE (SLSD) MANAGEMENT ORDER MINERS ASSOCIATION OF WESTERN AUSTRALIA	0.1012HA	<0.01%
R 8005	"C" CLASS RESERVE EXCEPTED FROM SALE & OCCUPATION	Reserve	DEPARTMENT OF PLANNING, LANDS AND HERITAGE (SLSD)	1.7092HA	0.02%
R 8081	"C" CLASS RESERVE TRADES HALL	Reserve	DEPARTMENT OF PLANNING, LANDS AND HERITAGE (SLSD)	0.2024HA	<0.01%



QUICK APPRAISAL DISCLAIMER: This report has been compiled from various data sources received from a number of agencies and with information supplied by applicants for mining tenements. No responsibility is accepted for any error or omission. The Commonwealth of Australia (c) 2002, through Geoscience Australia and Department of Defence maintains copyright over those parts of the topographic data it has provided for display in TENGGRAPH. Users wishing to use the data in its unaltered form should contact Geoscience Australia at www.ga.gov.au. Confirmation of the extent and composition of any Native Title Claims should be sought from the Native Title Spatial Services Landgate. Tengraph does not identify any land that has been alienated from the Crown before 1 January 1899 and a search of title records should be carried out through Landgate to identify this category of land. Land alienated from the Crown prior to 1 January 1899 may be open for mining only in respect to gold, silver and precious metals.

APPRAISAL ID: M 30/255

Tenement Status: Live **Boundary Type:** Granted Live
Holder/Applicant: CARNEGIE GOLD PTY LTD
Markout Date: 31/03/2016 11:35:00
Lodgement Date: 31/03/2016 15:37:00
Object Area: 7413.89 Ha. **Centroid:** (30° 3' 43" S, 120° 39' 17" E)
Appraisal Options: Admin Boundaries Affected, Tenements Affected, Land Affected, Native Title Details, Petroleum, Services/Infrastructure Affected, Map Sheet Details
Datum: GDA94

LAND AFFECTED

Land ID	Purpose/Name	Land Type	Responsible Agency/Vesting	Encroached Area	Encroached Percentage
R 8142	"C" CLASS RESERVE EXPLOSIVES	Reserve	RA:DEPARTMENT OF MINES, INDUSTRY REGULATION AND SAFETY MANAGEMENT ORDER MINISTER FOR MINES AND PETROLEUM	3.0817HA	0.04%
R 9453	"C" CLASS RESERVE HISTORIC CEMETERY SITE	Reserve	RA:SHIRE OF MENZIES VESTING SHIRE OF MENZIES	8.095HA	0.11%
R 9845	"C" CLASS RESERVE RACECOURSE	Reserve	DEPARTMENT OF PLANNING, LANDS AND HERITAGE (SLSD)	48.5893HA	0.66%
CLOSED ROAD	Closed Road	Reserve	Department of Planning, Lands and Heritage	15.2465HA	0.21%
ALASKA STREET	Road Regional	Road Isolation	See Services for agency information	0.6375HA	0.01%
BROWN STREET	Road Regional	Road Isolation	See Services for agency information	0.8848HA	0.01%
CASSIDY STREET	Road Regional	Road Isolation	See Services for agency information	2.6939HA	0.04%
CLUB STREET	Road Regional	Road Isolation	See Services for agency information	1.0736HA	0.01%
DAVIS STREET	Road Regional	Road Isolation	See Services for agency information	0.5825HA	0.01%
EILEEN STREET	Road Regional	Road Isolation	See Services for agency information	1.4123HA	0.02%
HARPER STREET	Road Regional	Road Isolation	See Services for agency information	0.5369HA	0.01%
HOMEWARD STREET	Road Regional	Road Isolation	See Services for agency information	2.4594HA	0.03%
KENNY STREET	Road Regional	Road Isolation	See Services for agency information	0.5824HA	0.01%
KING STREET	Road Regional	Road Isolation	See Services for agency information	0.4913HA	0.01%
MACE STREET	Road Regional	Road Isolation	See Services for agency information	2.739HA	0.04%
MELROSE STREET	Road Regional	Road Isolation	See Services for agency information	0.8199HA	0.01%
MENZIES STREET	Road Regional	Road Isolation	See Services for agency information	2.597HA	0.04%
OASIS STREET	Road Regional	Road Isolation	See Services for agency information	0.5368HA	0.01%
OWEN STREET	Road Regional	Road Isolation	See Services for agency information	0.4099HA	0.01%



QUICK APPRAISAL DISCLAIMER: This report has been compiled from various data sources received from a number of agencies and with information supplied by applicants for mining tenements. No responsibility is accepted for any error or omission. The Commonwealth of Australia (c) 2002, through Geoscience Australia and Department of Defence maintains copyright over those parts of the topographic data it has provided for display in TENGGRAPH. Users wishing to use the data in its unaltered form should contact Geoscience Australia at www.ga.gov.au. Confirmation of the extent and composition of any Native Title Claims should be sought from the Native Title Spatial Services Landgate. Tengraph does not identify any land that has been alienated from the Crown before 1 January 1899 and a search of title records should be carried out through Landgate to identify this category of land. Land alienated from the Crown prior to 1 January 1899 may be open for mining only in respect to gold, silver and precious metals.

APPRAISAL ID: M 30/255

Tenement Status: Live **Boundary Type:** Granted Live
Holder/Applicant: CARNEGIE GOLD PTY LTD
Markout Date: 31/03/2016 11:35:00
Lodgement Date: 31/03/2016 15:37:00
Object Area: 7413.89 Ha. **Centroid:** (30° 3' 43" S, 120° 39' 17" E)
Appraisal Options: Admin Boundaries Affected, Tenements Affected, Land Affected, Native Title Details, Petroleum, Services/Infrastructure Affected, Map Sheet Details
Datum: GDA94

LAND AFFECTED

Land ID	Purpose/Name	Land Type	Responsible Agency/Vesting	Encroached Area	Encroached Percentage
ROAD	Road Regional	Road Isolation	See Services for agency information	31.351HA	0.42%
ROW	Road Regional	Road Isolation	See Services for agency information	1.4741HA	0.02%
SIBERIA STREET	Road Regional	Road Isolation	See Services for agency information	2.867HA	0.04%
WAIHI STREET	Road Regional	Road Isolation	See Services for agency information	0.9564HA	0.01%
Unallocated Crown Land	Unallocated Crown Land:216 Land parcels affected	Cadastral	Landgate	3122.9757HA	42.12%
CPL 50	CALM PURCHASED FORMER LEASES CREDO P/L 3114/1086	Special Category Land	Dept. of Biodiversity, Conservation and Attractions	2872.0032HA	38.74%
FNA 13408	FILE NOTATION AREA PROPOSED CONSERVATION ESTATE	Special Category Land	DEPT. OF PARKS AND WILDLIFE	2872.0027HA	38.74%
FNA 16562	FILE NOTATION AREA PROPOSED SECTION 91 LICENCE, FOR 'OCCUPATION AND ACCESS', OVER PORTION OF UCL LOT 61, MOUNT BURGESS.	Special Category Land	DEPT. OF PLANNING, LANDS & HERITAGE	1.0611HA	0.01%
FNA 16750	FILE NOTATION AREA PROPOSED SECTION 91 LICENCE FOR 'LIVESTOCK MANAGEMENT' OVER UCL LOTS 12 AND 61 AND UNNUMBERED UCL, (EX CREDO PASTORAL LEASE), MENZIES, MOUNT BURGESS, ORA BANDA, ULARRING AND WALLEROO.	Special Category Land	DEPT. OF PLANNING, LANDS AND HERITAGE	2872.003HA	38.74%
GWA 21	GROUNDWATER AREA GOLDFIELDS	Special Category Land	Dept. of Water and Environmental Regulation	7413.8882HA	100%
MZ 2	MINERALISATION ZONE, NON SECTION 57(2AA) SOUTHERN SECTION	Special Category Land	Dept. of Mines, Industry Regulation and Safety	7413.8882HA	100%



QUICK APPRAISAL DISCLAIMER: This report has been compiled from various data sources received from a number of agencies and with information supplied by applicants for mining tenements. No responsibility is accepted for any error or omission. The Commonwealth of Australia (c) 2002, through Geoscience Australia and Department of Defence maintains copyright over those parts of the topographic data it has provided for display in TENGGRAPH. Users wishing to use the data in its unaltered form should contact Geoscience Australia at www.ga.gov.au. Confirmation of the extent and composition of any Native Title Claims should be sought from the Native Title Spatial Services Landgate. Tengraph does not identify any land that has been alienated from the Crown before 1 January 1899 and a search of title records should be carried out through Landgate to identify this category of land. Land alienated from the Crown prior to 1 January 1899 may be open for mining only in respect to gold, silver and precious metals.

APPRAISAL ID: M 30/255

Tenement Status: Live **Boundary Type:** Granted Live
Holder/Applicant: CARNEGIE GOLD PTY LTD
Markout Date: 31/03/2016 11:35:00
Lodgement Date: 31/03/2016 15:37:00
Object Area: 7413.89 Ha. **Centroid:** (30° 3' 43" S, 120° 39' 17" E)
Appraisal Options: Admin Boundaries Affected, Tenements Affected, Land Affected, Native Title Details, Petroleum, Services/Infrastructure Affected, Map Sheet Details
Datum: GDA94

NATIVE TITLE AREAS AFFECTED

NTRB ID	Name	NTRB	Description	Encroached Area	Encroached Percentage
ARB 13	Goldfields (ARB13)	NATIVE TITLE SERVICES GOLDFIELDS PO BOX 3007, EAST PERTH, WA, 6004 SAME AS CORRESPONDENCE	Aboriginal Representative Body	7413.8882HA	100%

Claimed FED CRT No	Name	Claimant Representative	Description	Encroached Area	Encroached Percentage
WAD647/2017	Marlinyu Ghoorlie WC2017/007	BLACKSHIELD LAWYERS LEVEL 28, AMP TOWER, 140 ST GEORGES TERRACE, PERTH, WA, 6000 SAME AS CORRESPONDENCE	Native Title Claims	7413.8882HA	100%

Determined FED CRT No	Name	Prescribed Body Corporate	Description	Encroached Area	Encroached Percentage
no intersections					

ILUA Subject Matter ID	Name	ILUA Title	Description	Encroached Area	Encroached Percentage
no intersections					

ENT No	Name	Managed By	Description	Encroached Area	Encroached Percentage
no intersections					

Pre-1994 Leases	Description	Encroached Area	Encroached Percentage
no intersections			

PETROLEUM/GEOTHERMAL TITLES AFFECTED

ID	Title Type	Holder/Applicant	Encroached Area	Encroached Percentage
no intersections				

SERVICES / INFRASTRUCTURE AFFECTED

Count	Layer	Description
1	Mines and Mineral Deposits	Anomaly A, Anomaly A / Davyhurst - Siberia, (Undeveloped)
1	Mines and Mineral Deposits	Bardoc, Bardoc - Davyhurst Group, (Shut)



QUICK APPRAISAL DISCLAIMER: This report has been compiled from various data sources received from a number of agencies and with information supplied by applicants for mining tenements. No responsibility is accepted for any error or omission. The Commonwealth of Australia (c) 2002, through Geoscience Australia and Department of Defence maintains copyright over those parts of the topographic data it has provided for display in TENGGRAPH. Users wishing to use the data in its unaltered form should contact Geoscience Australia at www.ga.gov.au. Confirmation of the extent and composition of any Native Title Claims should be sought from the Native Title Spatial Services Landgate. Tengraph does not identify any land that has been alienated from the Crown before 1 January 1899 and a search of title records should be carried out through Landgate to identify this category of land. Land alienated from the Crown prior to 1 January 1899 may be open for mining only in respect to gold, silver and precious metals.

APPRAISAL ID: M 30/255

Tenement Status: Live **Boundary Type:** Granted Live
Holder/Applicant: CARNEGIE GOLD PTY LTD
Markout Date: 31/03/2016 11:35:00
Lodgement Date: 31/03/2016 15:37:00
Object Area: 7413.89 Ha. **Centroid:** (30° 3' 43" S, 120° 39' 17" E)
Appraisal Options: Admin Boundaries Affected, Tenements Affected, Land Affected, Native Title Details, Petroleum, Services/Infrastructure Affected, Map Sheet Details
Datum: GDA94

SERVICES / INFRASTRUCTURE AFFECTED

Count	Layer	Description
1	Mines and Mineral Deposits	Communication Tower,Davyhurst Communication Tower, (Proposed)
1	Mines and Mineral Deposits	Davyhurst,Davyhurst Group, (Care and Maintenance)
1	Mines and Mineral Deposits	Davyhurst-Lights of Israel,Davyhurst - Lights of Israel Group, (Shut)
1	Mines and Mineral Deposits	Env Group,Davyhurst Environmental Group, (Proposed)
1	Mines and Mineral Deposits	Federal Flag Li,Federal Flag Lithium, (Undeveloped)
1	Mines and Mineral Deposits	Federal Flag North,Federal Flag North, (Shut)
1	Mines and Mineral Deposits	Federal Flag West,Federal Flag West, (Shut)
1	Mines and Mineral Deposits	Federal Flag,Federal Flag, (Proposed)
1	Mines and Mineral Deposits	Golden Eagle(Removed),Golden Eagle Plant (Removed), (Shut)
1	Mines and Mineral Deposits	Golden Eagle,Golden Eagle - North Pole, (Care and Maintenance)
1	Mines and Mineral Deposits	Golden Pole,Golden Pole Tailings, (Shut)
1	Mines and Mineral Deposits	Great Ophir,Great Ophir, (Proposed)
71	Mines and Mineral Deposits	Historical Minesites
1	Mines and Mineral Deposits	Homeward Bound,Homeward Bound - Davyhurst, (Shut)
1	Mines and Mineral Deposits	In-Pit TSF,Great Ophir In-Pit TSF, (Shut)
1	Mines and Mineral Deposits	In-Pit TSF,Homeward Bound In-Pit TSF, (Care and Maintenance)
1	Mines and Mineral Deposits	In-Pit TSF,Waihi Central In-Pit TSF, (Care and Maintenance)
1	Mines and Mineral Deposits	In-Pit TSF,Waihi North In-Pit TSF, (Care and Maintenance)
1	Mines and Mineral Deposits	In-Pit TSF,Waihi South In-Pit TSF, (Care and Maintenance)
1	Mines and Mineral Deposits	Lady Eileen S,Lady Eileen South, (Shut)
1	Mines and Mineral Deposits	Lady Eileen,Lady Eileen, (Shut)
1	Mines and Mineral Deposits	Lights of Israel Pit,Lights of Israel Openpit, (Shut)
1	Mines and Mineral Deposits	Lights of Israel UG,Lights of Israel Underground, (Proposed)
1	Mines and Mineral Deposits	Macedon,Macedon, (Proposed)
1	Mines and Mineral Deposits	Makai,Makai, (Proposed)
1	Mines and Mineral Deposits	Pipeline,Golden Eagle Dewatering Pipeline, (Proposed)
1	Mines and Mineral Deposits	Round Dam E,Round Dam E, (Shut)
1	Mines and Mineral Deposits	Round Dam,Round Dam Group, (Shut)
1	Mines and Mineral Deposits	Salmon Gums,Salmon Gums - Bardoc, (Proposed)
1	Mines and Mineral Deposits	TSF,Golden Eagle TSF, (Shut)
1	Mines and Mineral Deposits	TSF,Golden Eagle in-Pit TSF, (Proposed)
1	Mines and Mineral Deposits	TSF,Great Ophir TSF, (Shut)
1	Mines and Mineral Deposits	Waihi Central,Waihi Central, (Shut)
1	Mines and Mineral Deposits	Waihi N,Waihi North, (Shut)
1	Mines and Mineral Deposits	Waihi S,Waihi South, (Shut)
1	Mines and Mineral Deposits	Walhalla,Walhalla, (Care and Maintenance)
1	Mines Operating or Under Development	Golden Eagle UG,Golden Eagle Underground, (Operating)
1	Mines Operating or Under Development	Plant,Davyhurst Plant, (Operating)
858	Abandoned Mines Inventory	



QUICK APPRAISAL DISCLAIMER: This report has been compiled from various data sources received from a number of agencies and with information supplied by applicants for mining tenements. No responsibility is accepted for any error or omission. The Commonwealth of Australia (c) 2002, through Geoscience Australia and Department of Defence maintains copyright over those parts of the topographic data it has provided for display in TENGGRAPH. Users wishing to use the data in its unaltered form should contact Geoscience Australia at www.ga.gov.au. Confirmation of the extent and composition of any Native Title Claims should be sought from the Native Title Spatial Services Landgate. TENGGRAPH does not identify any land that has been alienated from the Crown before 1 January 1899 and a search of title records should be carried out through Landgate to identify this category of land. Land alienated from the Crown prior to 1 January 1899 may be open for mining only in respect to gold, silver and precious metals.

APPRAISAL ID: M 30/255

Tenement Status: Live **Boundary Type:** Granted Live
Holder/Applicant: CARNEGIE GOLD PTY LTD
Markout Date: 31/03/2016 11:35:00
Lodgement Date: 31/03/2016 15:37:00
Object Area: 7413.89 Ha. **Centroid:** (30° 3' 43" S, 120° 39' 17" E)
Appraisal Options: Admin Boundaries Affected, Tenements Affected, Land Affected, Native Title
 Details, Petroleum, Services/Infrastructure Affected, Map Sheet Details
Datum: GDA94

SERVICES / INFRASTRUCTURE AFFECTED

Count	Layer	Description
40	Building	
1	Cultural Line Feature	DamWall
1	Cultural Line Feature	PipelineWater
1	Fences	Fence
4	Hydrology Point Feature	EarthDam
1	Hydrology Point Feature	Tank
1	Railway Line	Dismantled
3	Road Network	Minor, Coolgardie North Rd, LGA
2	Road Network	Minor, Davyhurst Rd, LGA
2	Road Network	Minor, Davyhurst-Mulline Rd, LGA
50	Road Network	Minor, LGA
11	Road Network	Track
1	Road Network	Track, DEC
1	Standard Survey Marks	KALGOORLIE 53
1	Standard Survey Marks	MENZIES 1
1	Standard Survey Marks	R 476
1	Survey Traverse Line	G.D. ROBINSON FB 16 p18
1	Survey Traverse Line	N.M. BRAZIER FB 9 (Between NB 6 & 7)
15	Watercourse Line	
11	Watercourse Line	PAPERTALK BROOK

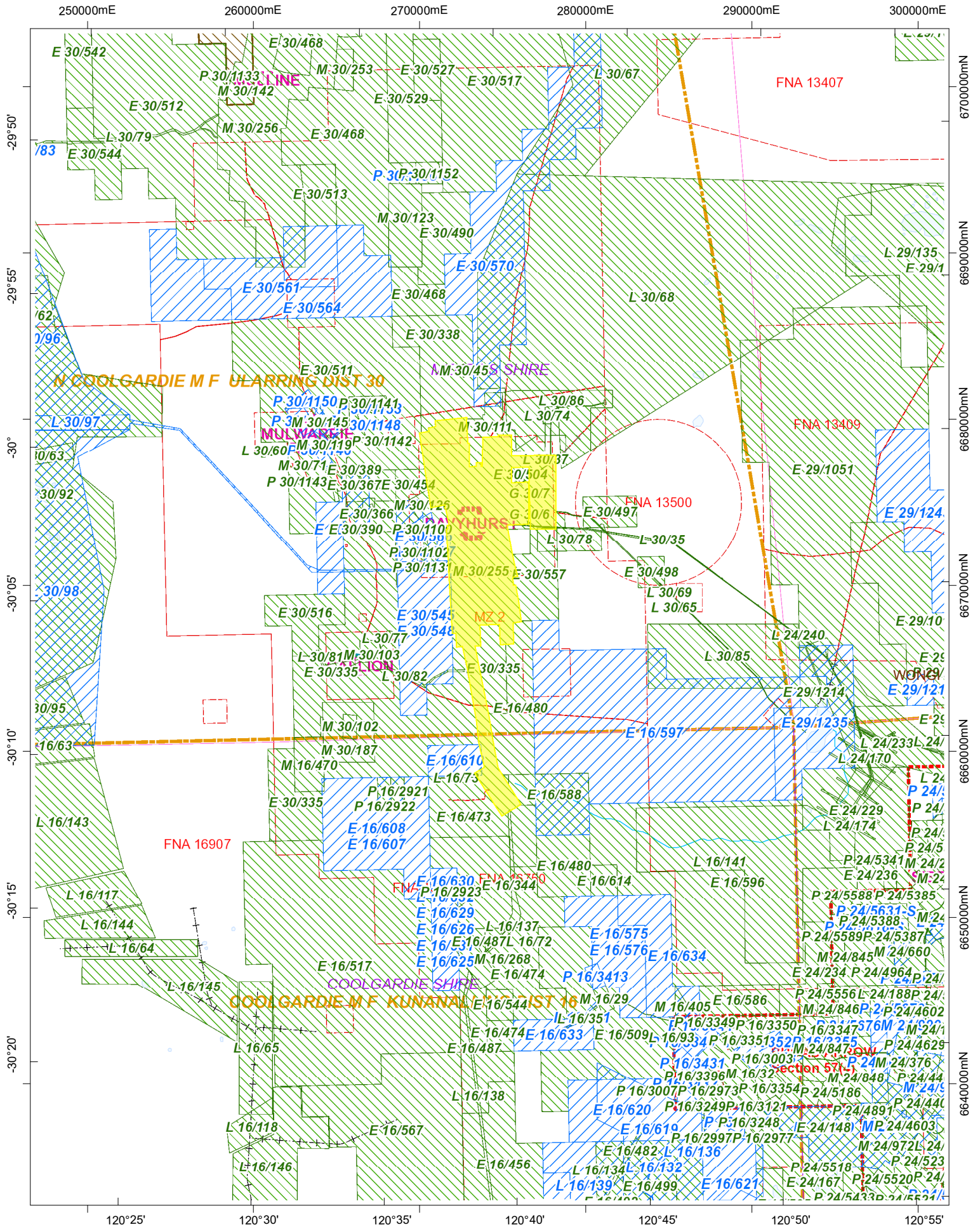
MAP SHEETS AFFECTED

Map Sheet Id	Map Sheet Name	Map Scale	Encroached Area	Encroached Percentage
3037	DAVYHURST	1:100,000 Mapsheet Index	7129. 2559HA	96.16%
SH5109	KALGOORLIE	1:250,000 Mapsheet Index	7129. 2545HA	96.16%
SH5105	MENZIES	1:250,000 Mapsheet Index	284. 6337HA	3.84%
3038	RIVERINA	1:100,000 Mapsheet Index	284. 6323HA	3.84%
SH51	KALGOORLIE	1:1,000,000 Mapsheet Index	7413. 8882HA	100%

---END OF REPORT---



M 30/255, Quick Appraisal Plan



This plan has been compiled from various data sources received from a number of agencies and with information supplied by applicants for mining tenements. No responsibility is accepted for any error or omission. The Commonwealth of Australia (c) 2002, through Geoscience Australia and the Department of Defence, maintains copyright over those parts of the topographic data it has provided for display in TENGRAPH. Users wishing to use the data in its unaltered form should contact Geoscience Australia at www.ga.gov.au. Confirmation of the extent and composition of any Native Title Claims should be sought from the Native Title Spatial Services Landgate. Enclosed Pastoral Lease land and Pre 1994 mining confined to Nharuwananga Wajarri and Ngarlawaungga ILUA Native Title determination boundary.

Scale: 1:288,895

